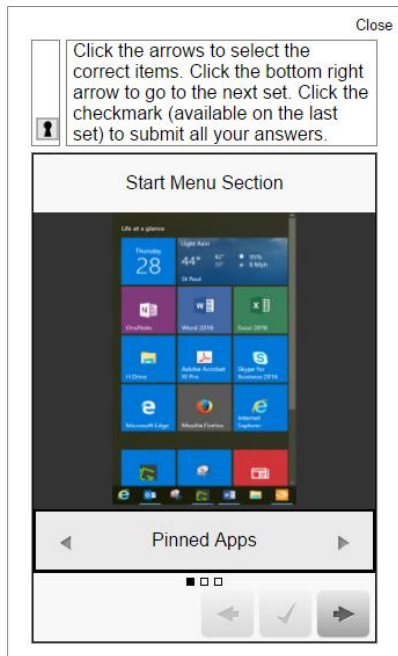


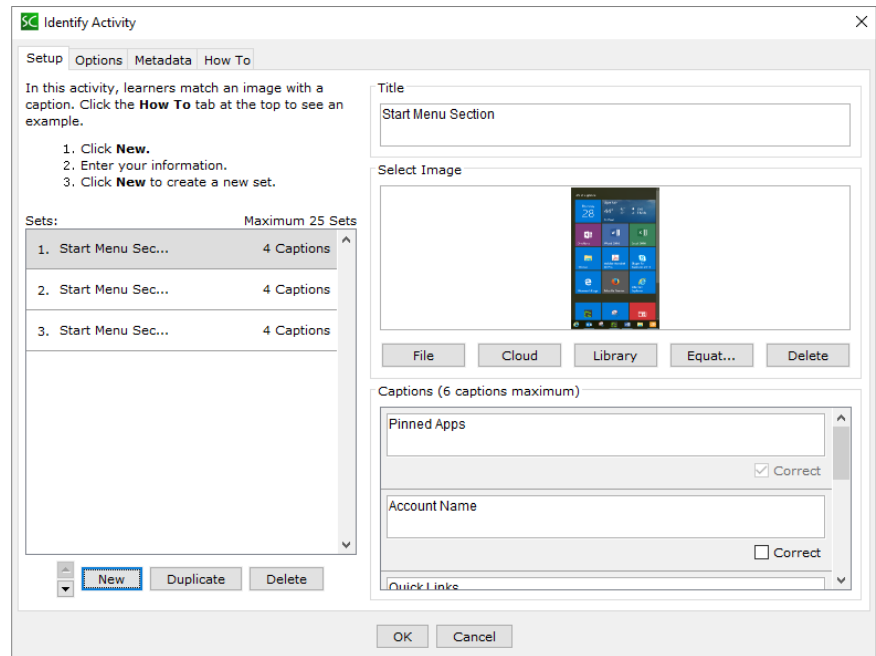
## Identify\*

Points		Display Options				Notes
Points can be earned	Points Range	Hover	Open from Image	Clickable Text	Display Inline	Additional options: Allow retry
✓	1 - 100		✓	✓	✓	To edit an item or set, click on the set in the Sets section.

### Front End

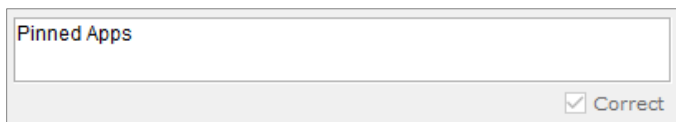


### Back End



### How to Create Identify Activity

1. Click New button to create first set.
2. Enter Title of first set.
3. [Optional] Under Select Image section, add image or equation.
4. Enter possible answers in Captions boxes. Check the box next to Correct below the correct answer.

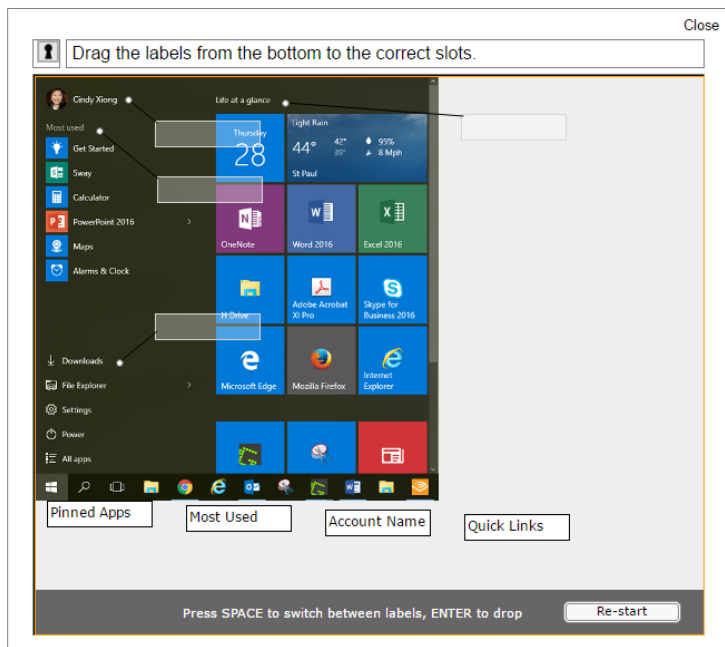


5. Repeats steps 1 – 3 until you've added all sets.
6. [Optional] Update **Options** and **Metadata** tabs.
7. Click **OK** to save the activity and to exit the window.

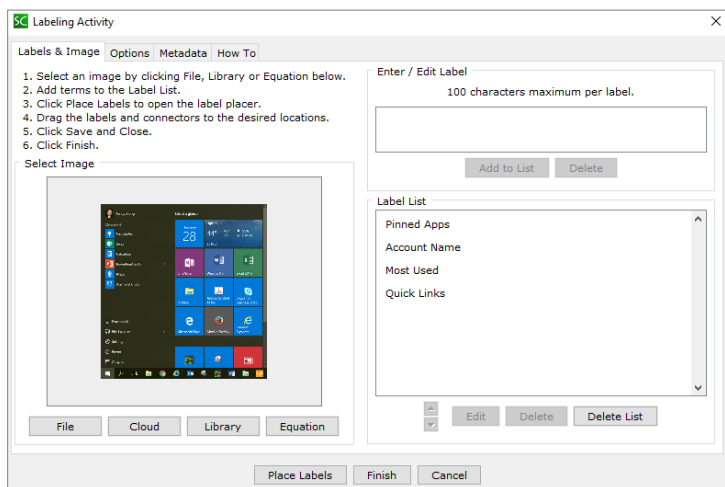
## Labeling\*

Points		Display Options				Notes
Points can be earned	Points Range	Hover	Open from Image	Clickable Text	Display Inline	
✓	1 - 100		✓	✓	✓	Additional options: <ul style="list-style-type: none"> <li>• Big text</li> <li>• Play feedback sounds</li> <li>• Show restart button</li> <li>• Background style color (white or grey)</li> </ul> To edit a label, click on label line and then click the <b>Edit</b> button.

## Front End

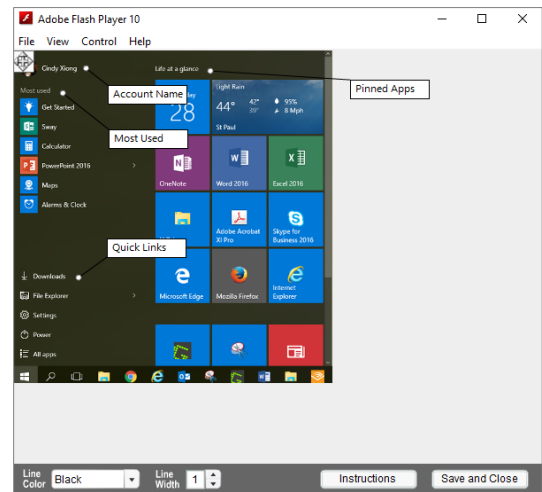


## Back End



## How to Create Labeling Activity

1. Under the **Select Image** section, select an image or create an equation.
2. Enter each term/label in the **Enter/Edit Label** section and then click **Add to List**. Entries will then be shown in the Label List section.
3. When done entering all the labels, click **Place Labels** button.
4. An Adobe Flash Player window will open so that you can position the labels in the correct location. When done, click Save and Close button.



5. [Optional] Update **Options** and **Metadata** tabs.
6. Click **Finish** to save the activity and exit the window.